



HURRICANE HARVEY BRIEFING

10:30 AM CDT
Friday, August 25, 2017

Prepared by:
Roger Erickson



Situation Overview



Lake Charles
WEATHER FORECAST OFFICE

Hurricane Harvey

- Hurricane Harvey is almost a category 3 hurricane, and could make landfall as a major category 4 hurricane on the central Texas coast Saturday morning.
- Harvey will weaken to a tropical storm by Sunday, before slowly moving up the Texas coast next week.
- Long duration of heavy rain and flooding will be possible across our region.
 - Storm totals: Southeast Texas 10-20 inches, Southwest Louisiana 8-15 inches, Central Louisiana 5-7 inches, South Central Louisiana 7-10 inches.
 - Major river flooding is possible on Pine Island Bayou near Sour Lake and the Calcasieu River at Old Town Bay and Sam Houston Jones State Park.

Situation Overview



Lake Charles
WEATHER FORECAST OFFICE

Hurricane Harvey

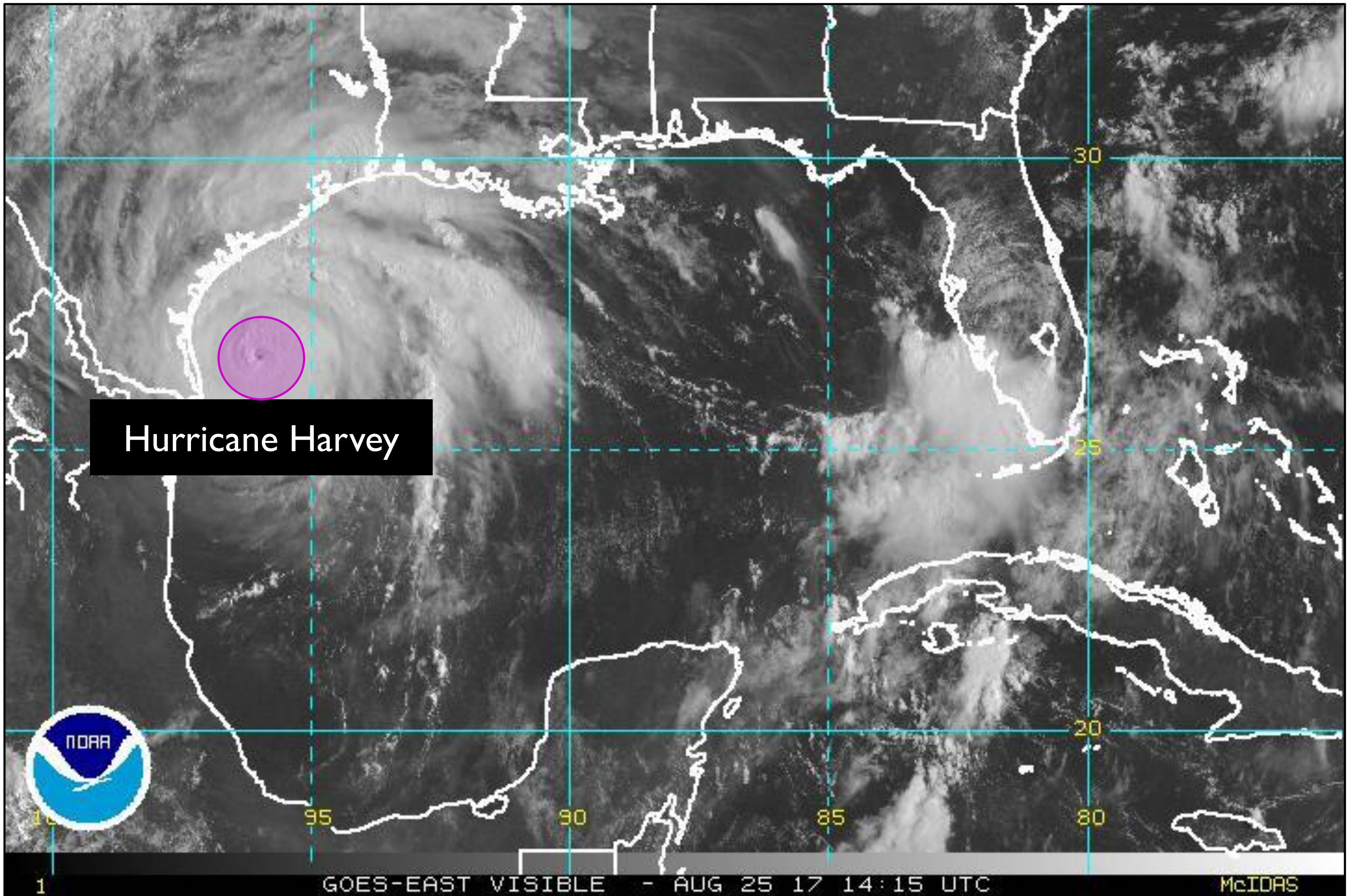
- Storm Surge will be one to three feet above ground level for coastal sections of southeast Texas and southwest Louisiana, and one to two feet above ground level in south central Louisiana.
 - Timing of the highest storm surge threat is this evening through Sunday morning, especially during high tide.
- Winds could gust in the 25-35 mph range along coastal sections of southeast Texas and southern Louisiana Friday night through Sunday night.
- The tornado threat is increasing for southeast Texas and parts of southwest Louisiana today and Saturday.

Current Satellite View



Lake Charles
WEATHER FORECAST OFFICE

Hurricane Harvey

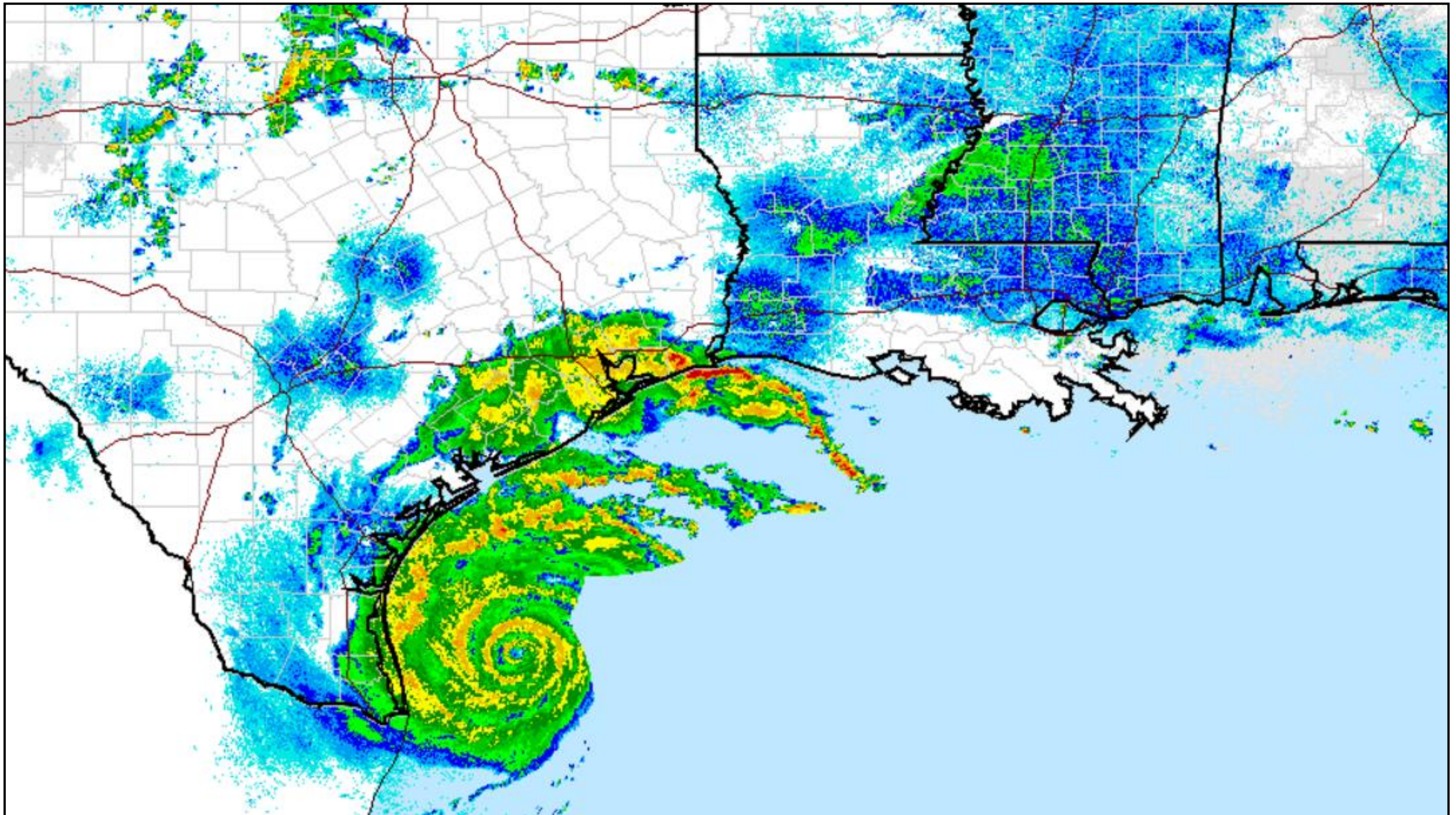


Regional Radar View

Hurricane Harvey



Lake Charles
WEATHER FORECAST OFFICE



The eye of Harvey is seen off the south Texas coast. A strong rain band of showers and isolated thunderstorms is moving onshore this morning in southeast Texas and southwest Louisiana. Expect heavy rain and the possibility of isolated tornadoes.

Situation Overview



Lake Charles

WEATHER FORECAST OFFICE

Hurricane Harvey



- After Harvey makes landfall as a major category 3 or 4 hurricane, it meanders near the central Texas coast before heading up the Texas coast towards our region. If it stays over land, it will be a weaker storm. Nevertheless, it will produce a significant amount of rain along its path.

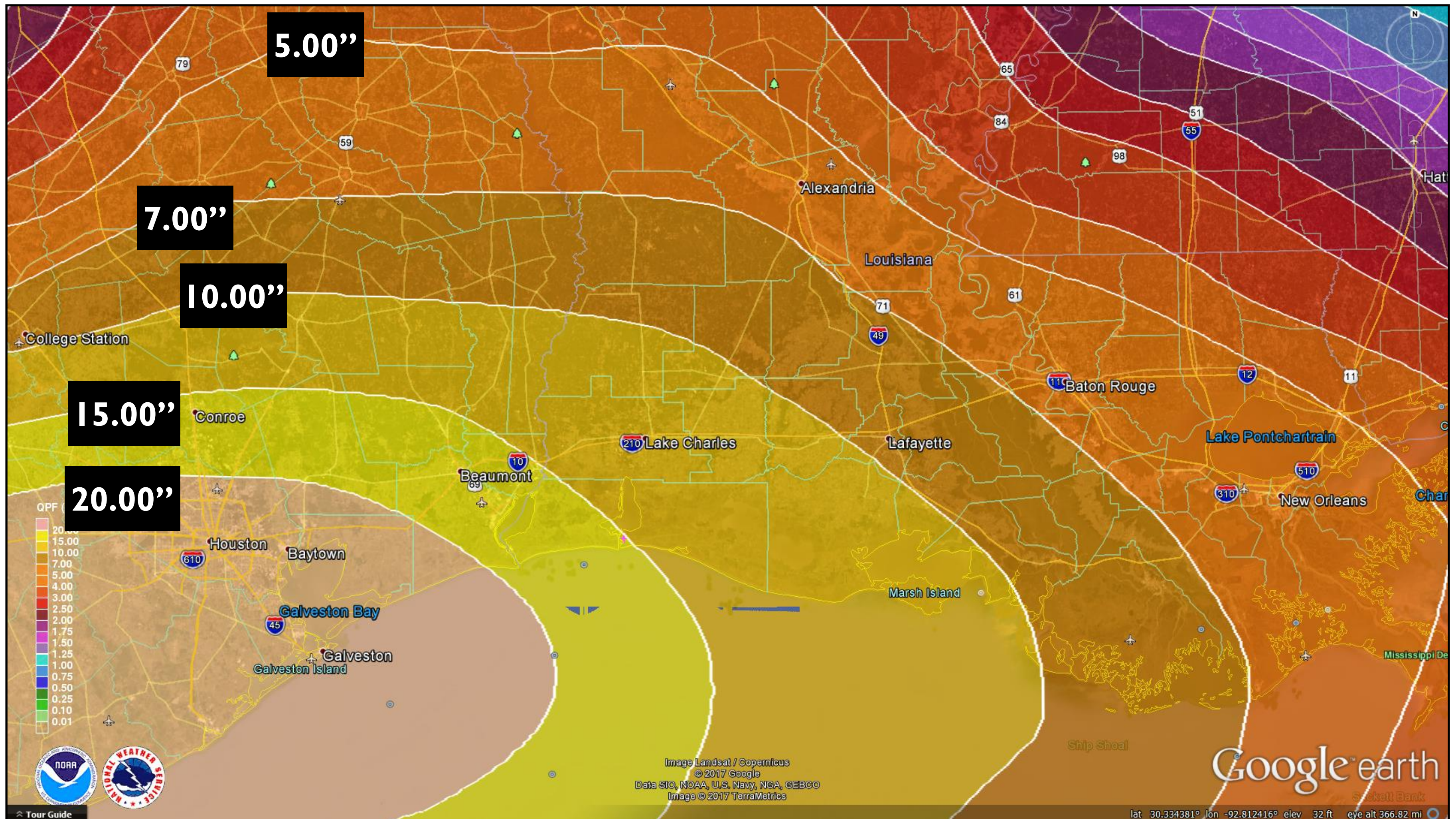
NOTE: Do not focus on the exact track. Impacts can occur well outside the area enclosed by the cone.

Expected Storm Total Rainfall



Lake Charles
WEATHER FORECAST OFFICE

Hurricane Harvey



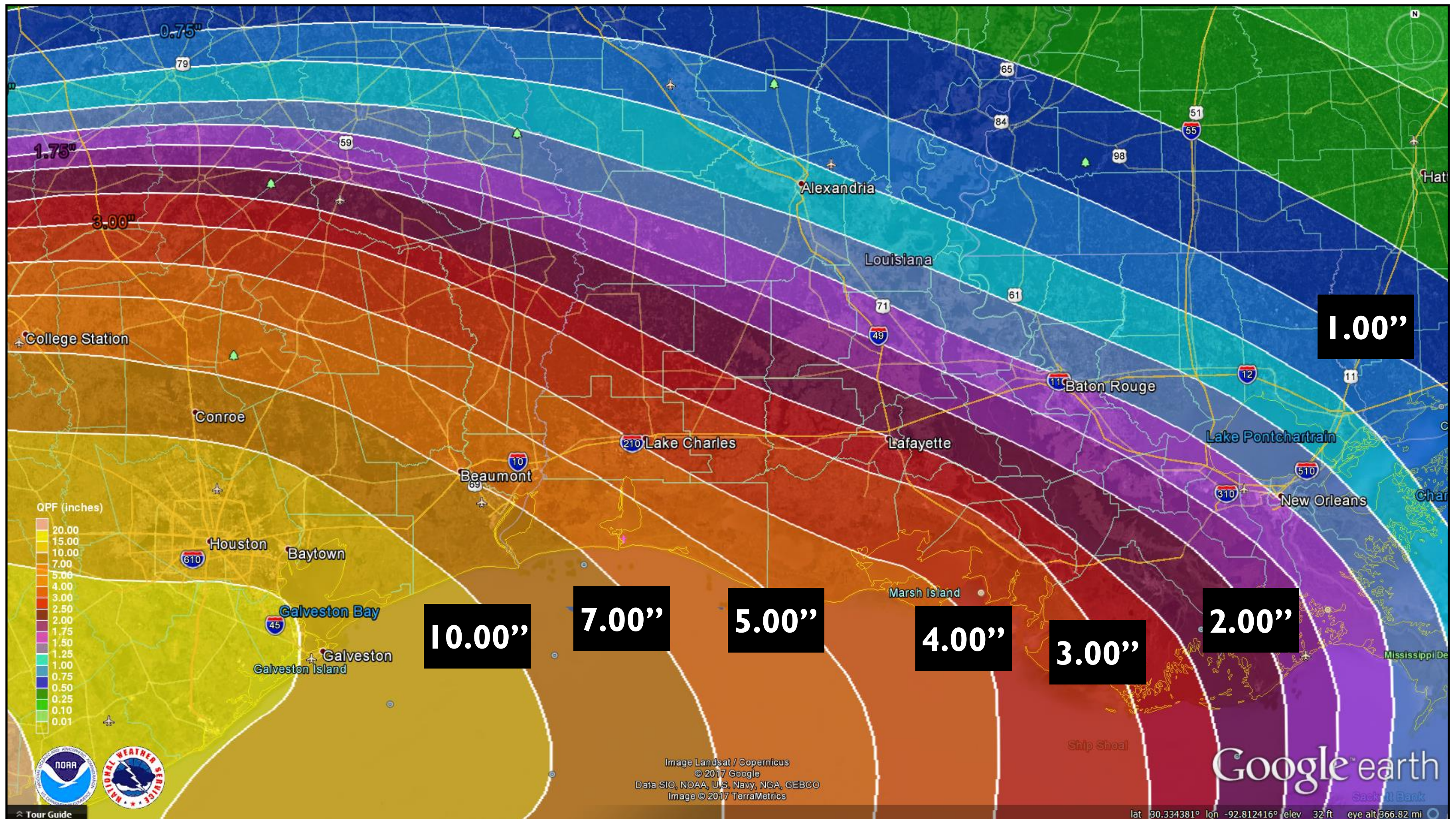
Rainfall Totals 7 am Today Through 7 am Friday

Expected Rainfall

Hurricane Harvey



Lake Charles
WEATHER FORECAST OFFICE



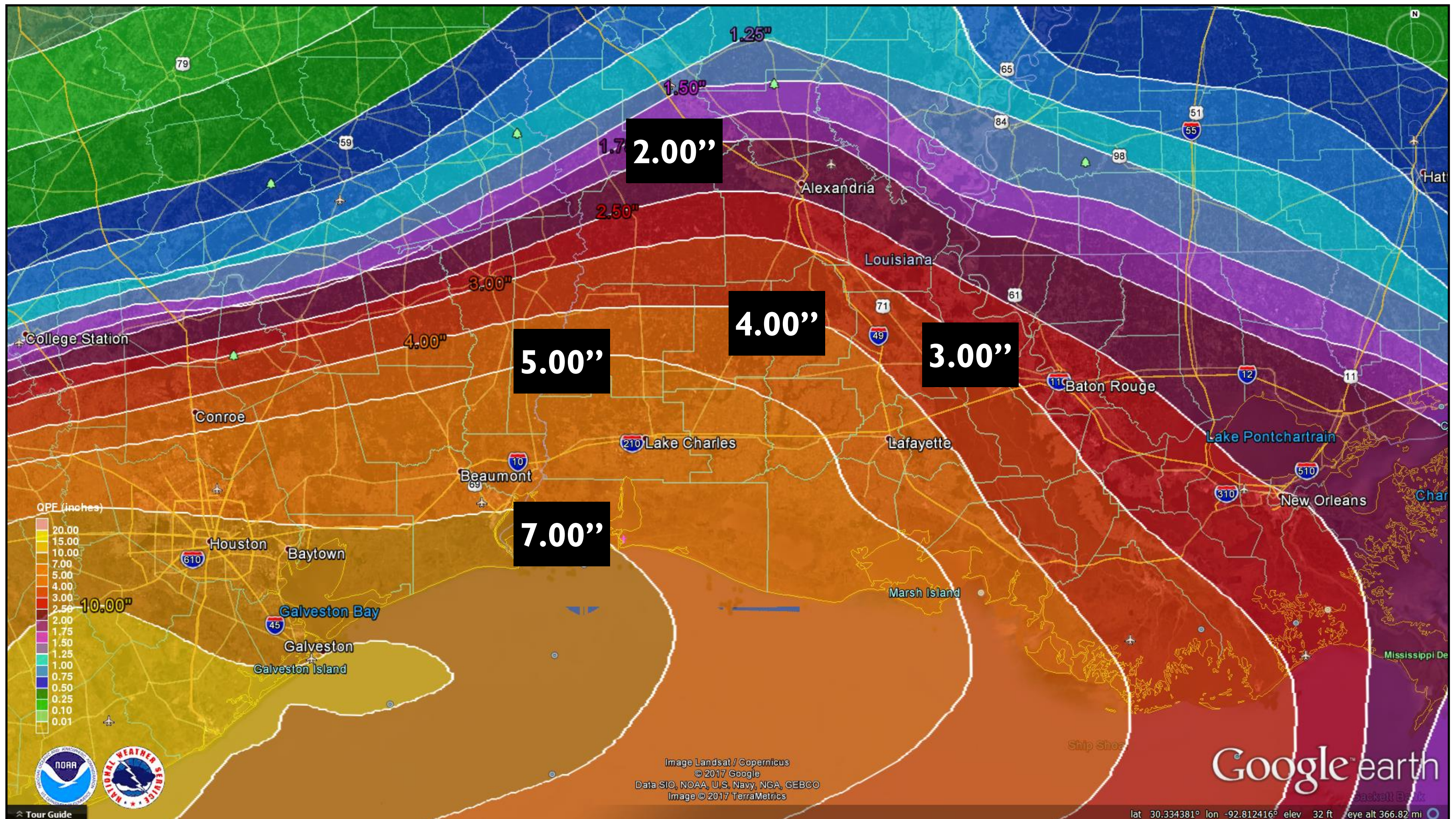
Rainfall Totals 7 am Today Through 7 am Monday

Expected Rainfall

Hurricane Harvey



Lake Charles
WEATHER FORECAST OFFICE



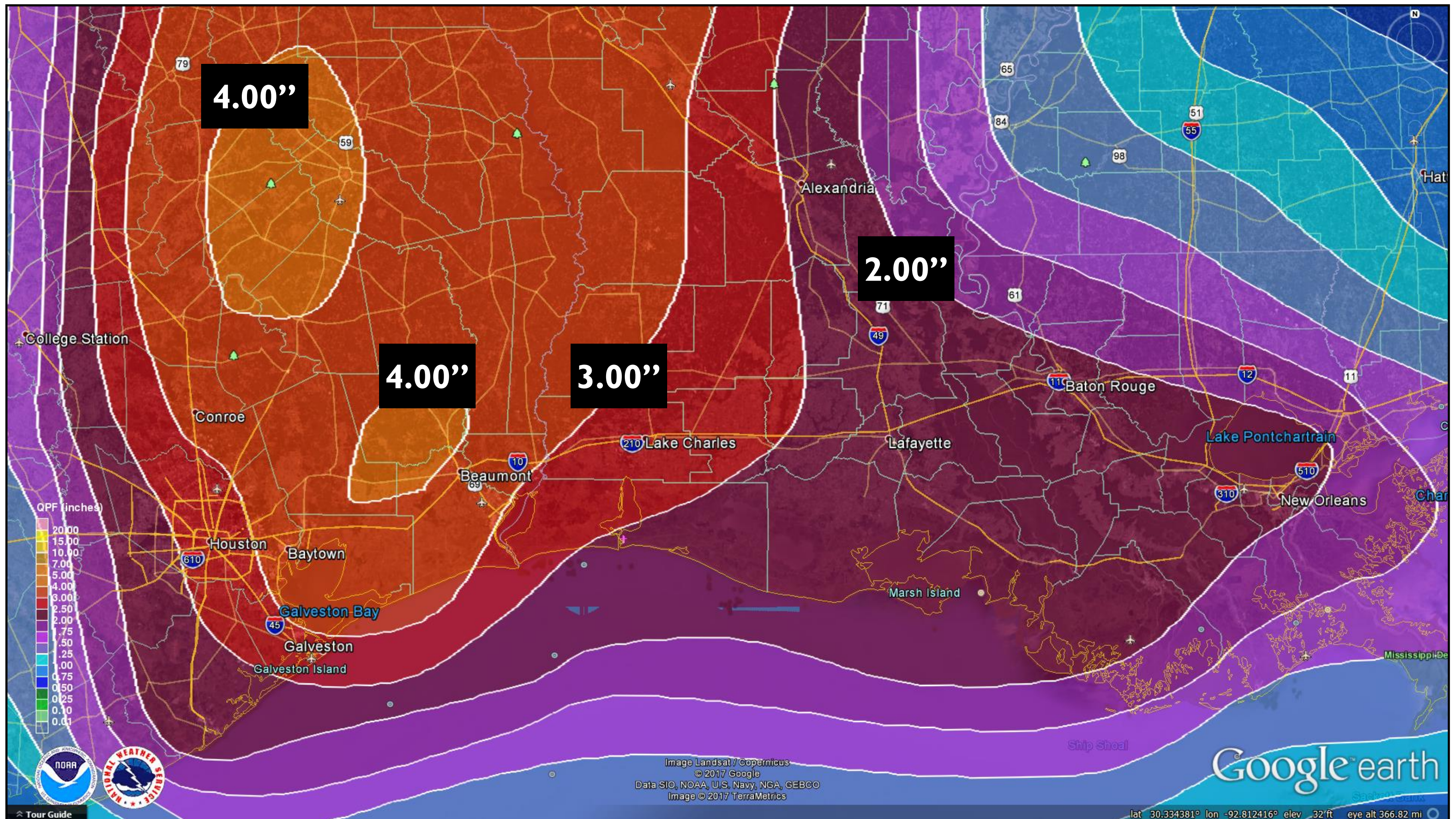
Rainfall Totals 7 am Monday Through 7 am Wednesday

Expected Rainfall

Hurricane Harvey



Lake Charles
WEATHER FORECAST OFFICE



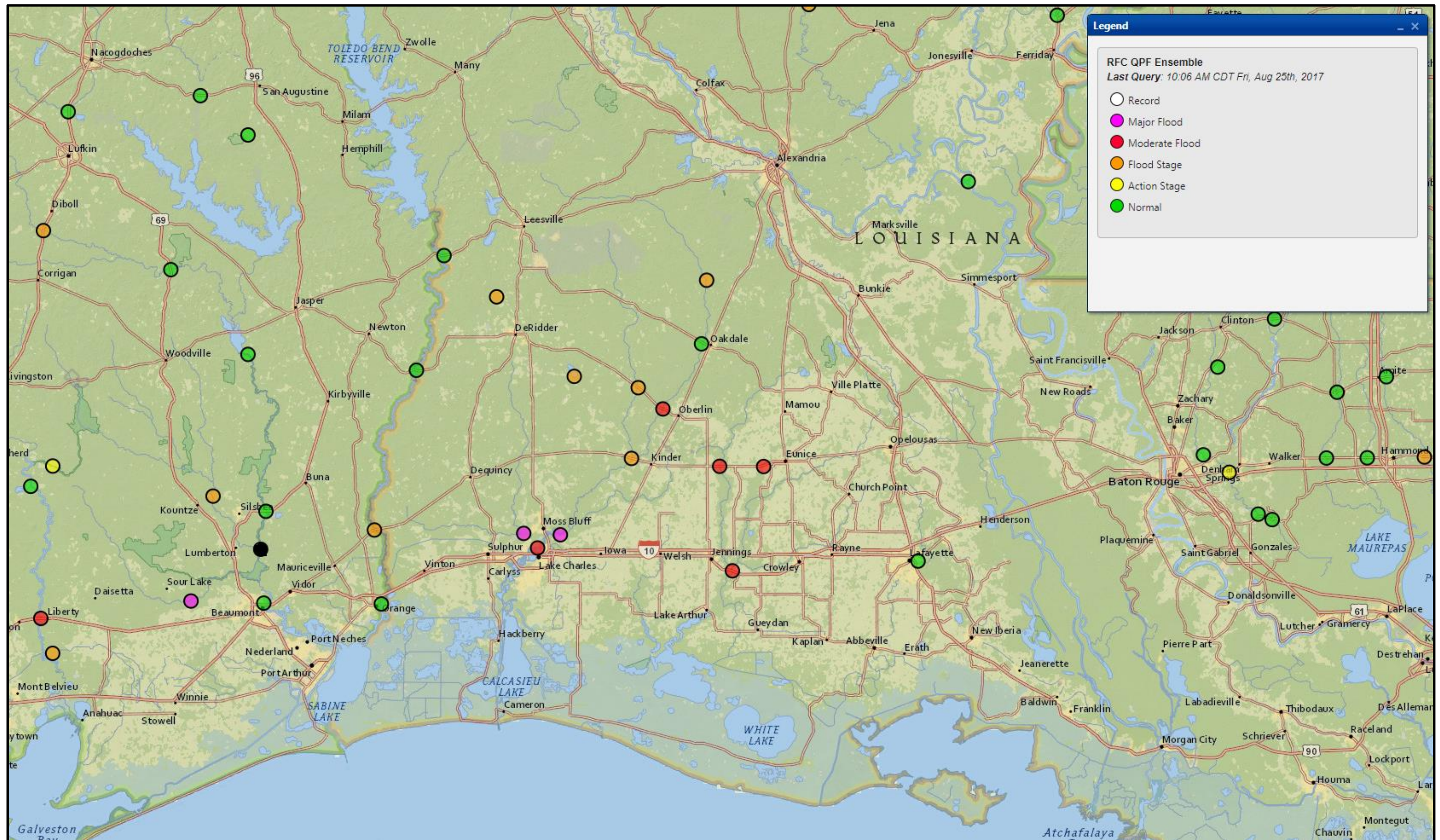
Rainfall Totals 7 am Wednesday Through 7 am Friday

Potential River Flooding



Lake Charles
WEATHER FORECAST OFFICE

Hurricane Harvey



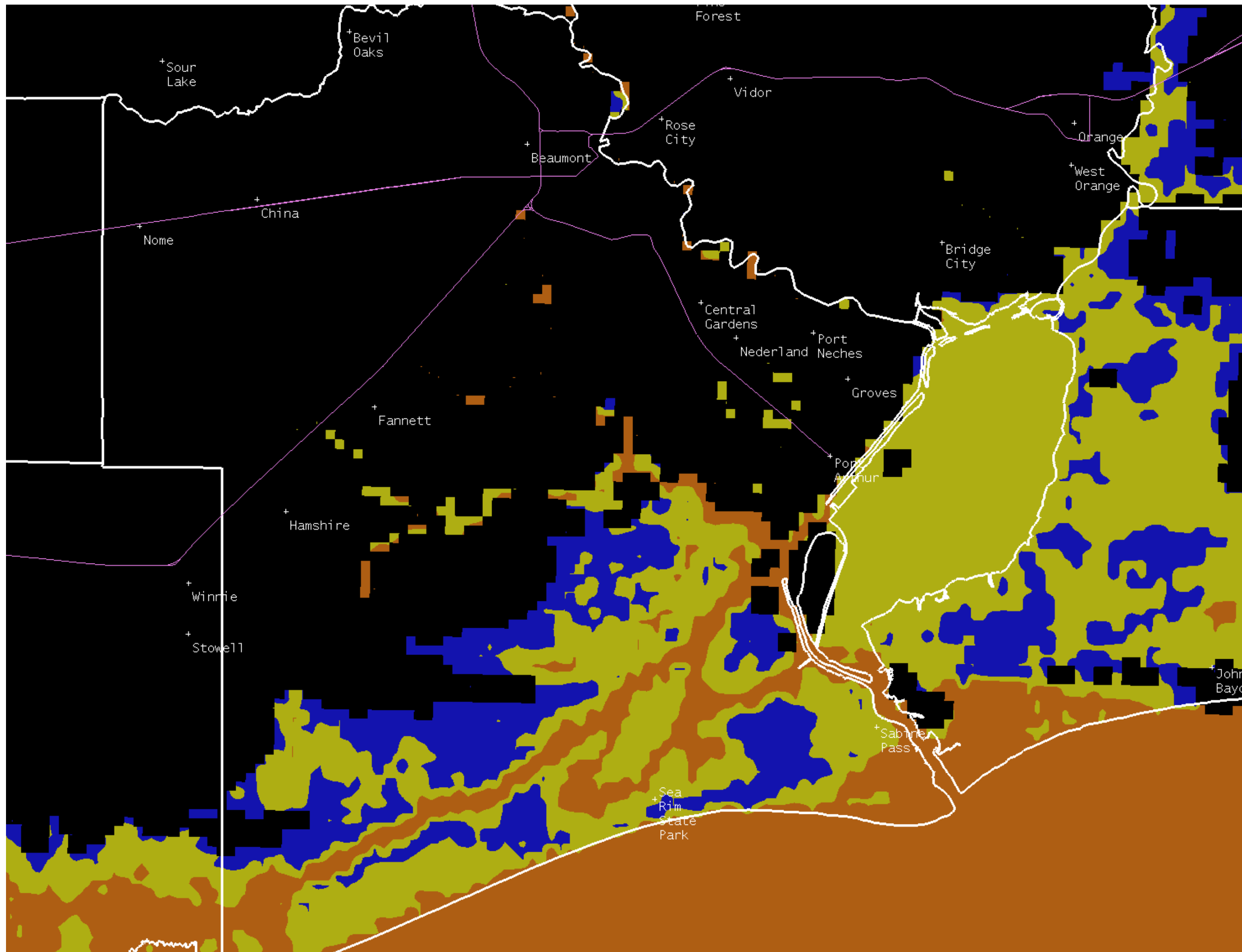
This map depicts the potential river flooding based on rainfall forecasts through 5 days. Major flooding is possible on Pine Island bayou near Sour Lake and the Calcasieu River near Old Town Bay and the west fork at Sam Houston State Park. This graphic will be updated daily.

Potential Storm Surge



Lake Charles
WEATHER FORECAST OFFICE

Hurricane Harvey



Areas of greatest risk:

- Sabine Pass, low spots in Bridge City, Taylors Bayou and Hillebrandt Bayou area.

Timing

- Early Saturday morning through Sunday morning.
- Saturday morning high tide: 6:38 am.

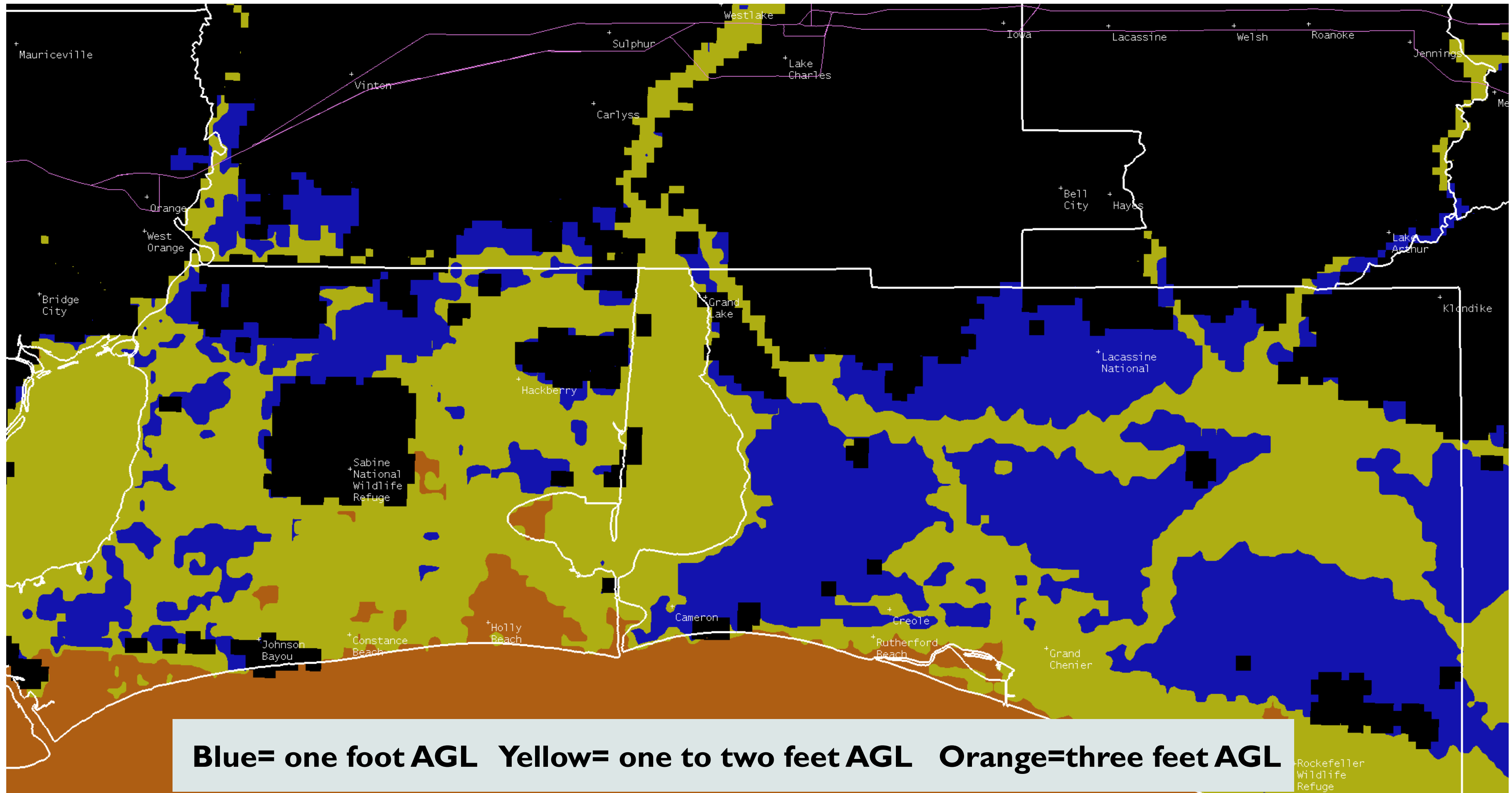
Blue= one foot AGL Yellow= one to two feet AGL Orange=three feet AGL

Potential Storm Surge



Lake Charles
WEATHER FORECAST OFFICE

Hurricane Harvey



Areas of greatest risk:

- Holly Beach, downtown Cameron, Hackberry near Kelso Bayou, Creole, Rutherford Beach, Grand Chenier near Mermentau River, Deatonville, I-10 beach area downtown Lake Charles.

Timing

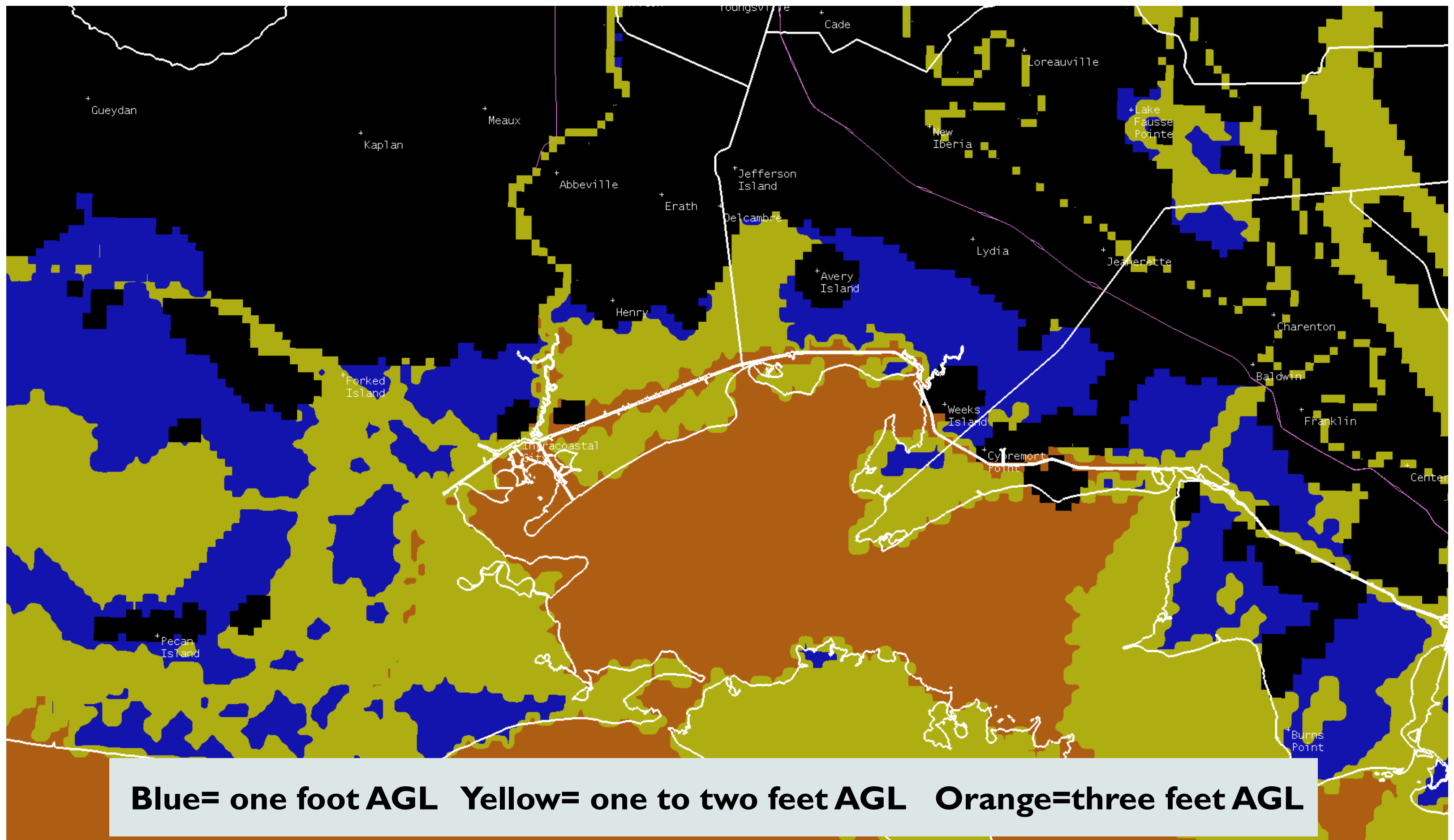
- Early Saturday morning through Sunday morning.
- Saturday morning high tide: 6:25 am.

Potential Storm Surge



Lake Charles
WEATHER FORECAST OFFICE

Hurricane Harvey



Blue= one foot AGL Yellow= one to two feet AGL Orange=three feet AGL

Areas of greatest risk:

- Pecan Island, Forked Island, Intracoastal City, Delcambre, Port of Iberia, Cypremort Point, Burn's Point.

Timing

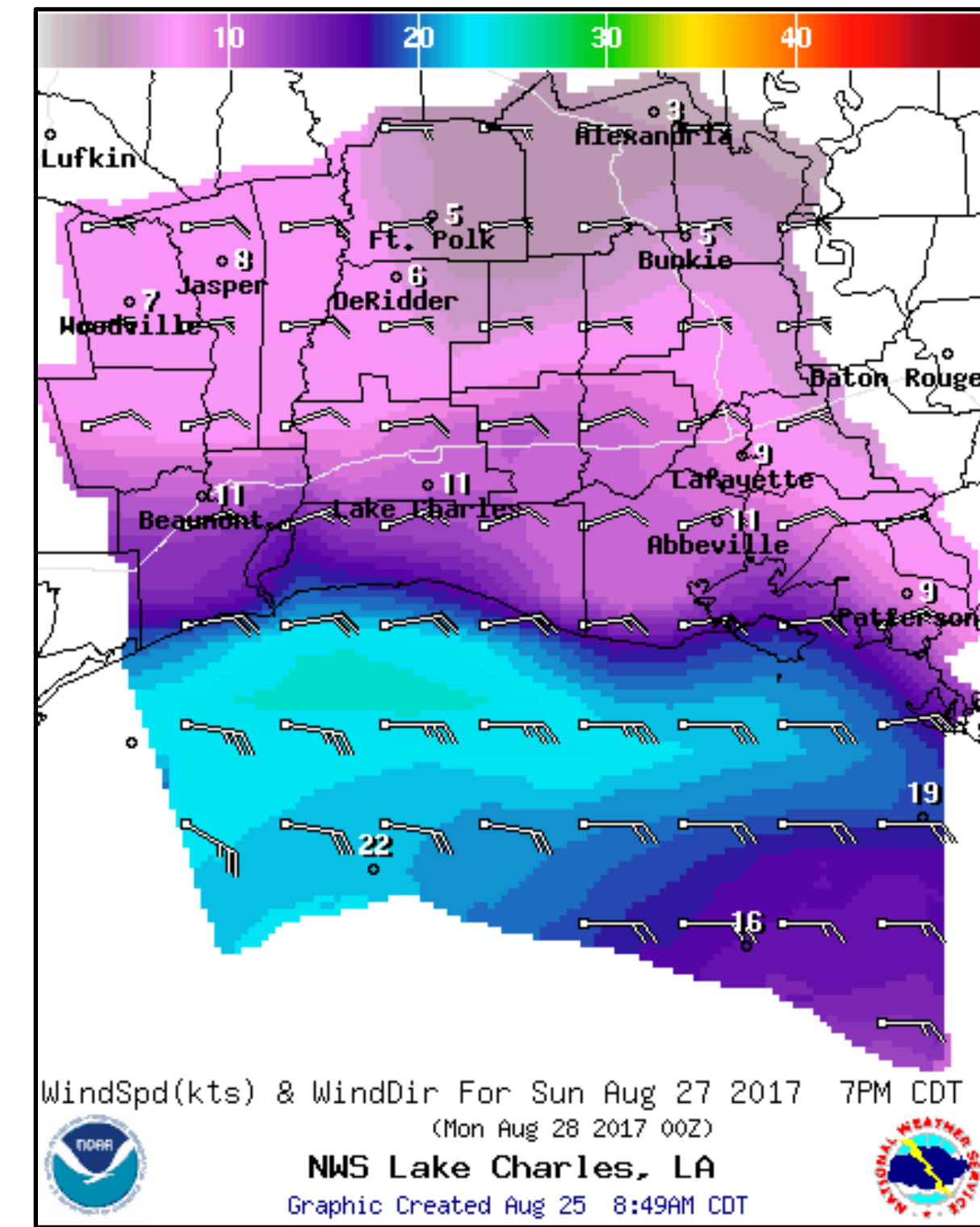
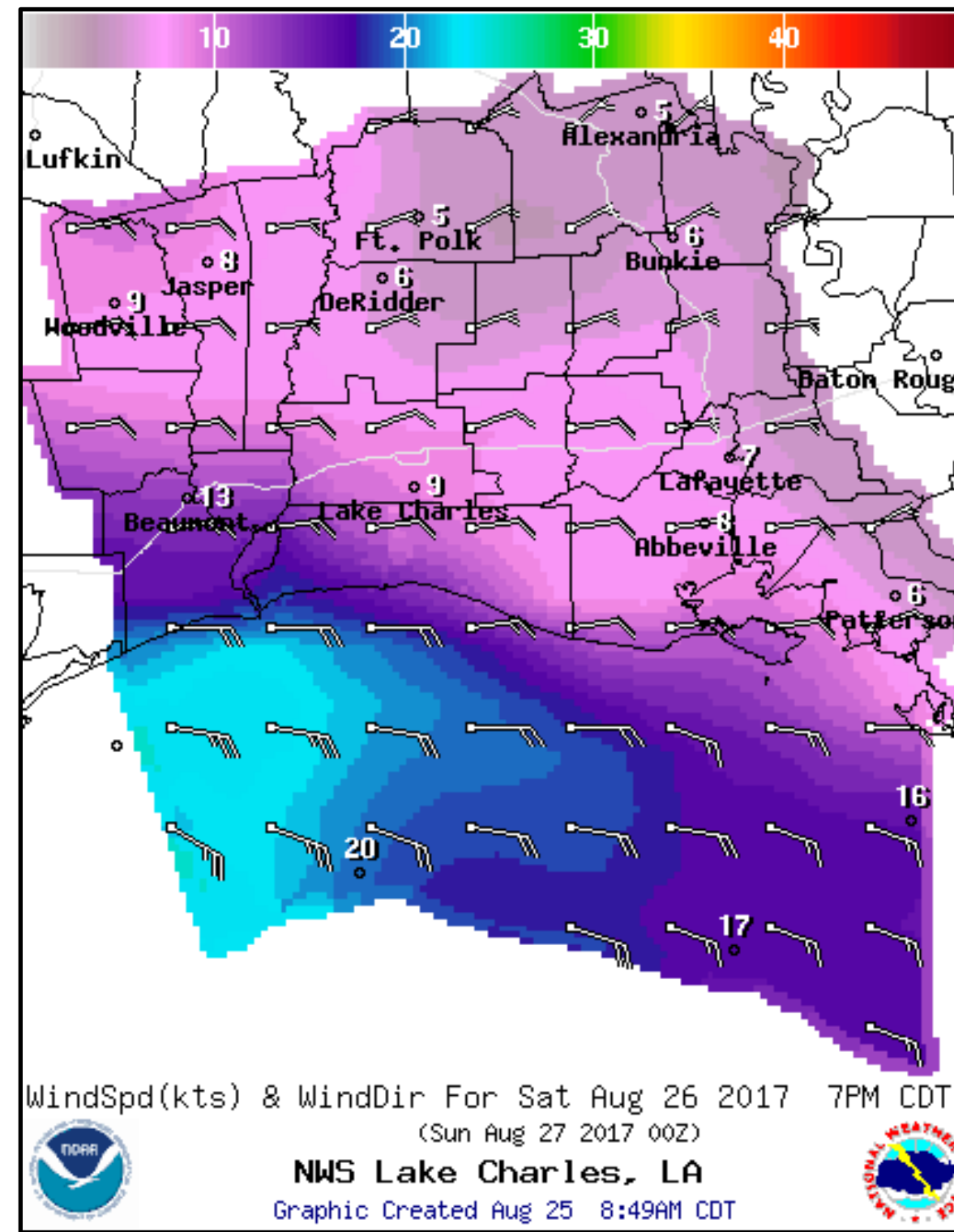
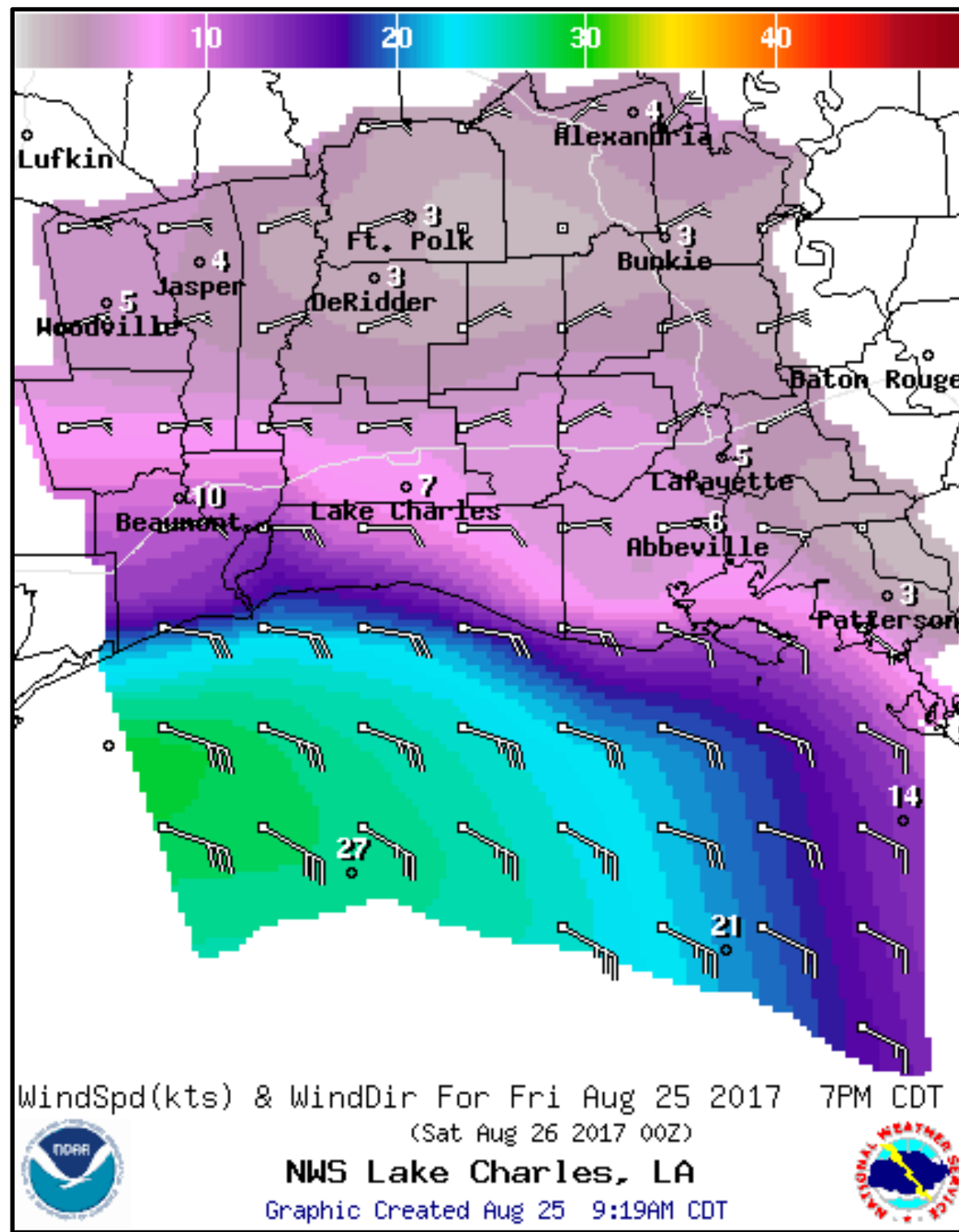
- Early Saturday morning through Sunday morning.
- Saturday morning high tide: 5:55 am.

Wind Threat / Potential Impact



Lake Charles
WEATHER FORECAST OFFICE

Hurricane Harvey



There is a potential for:

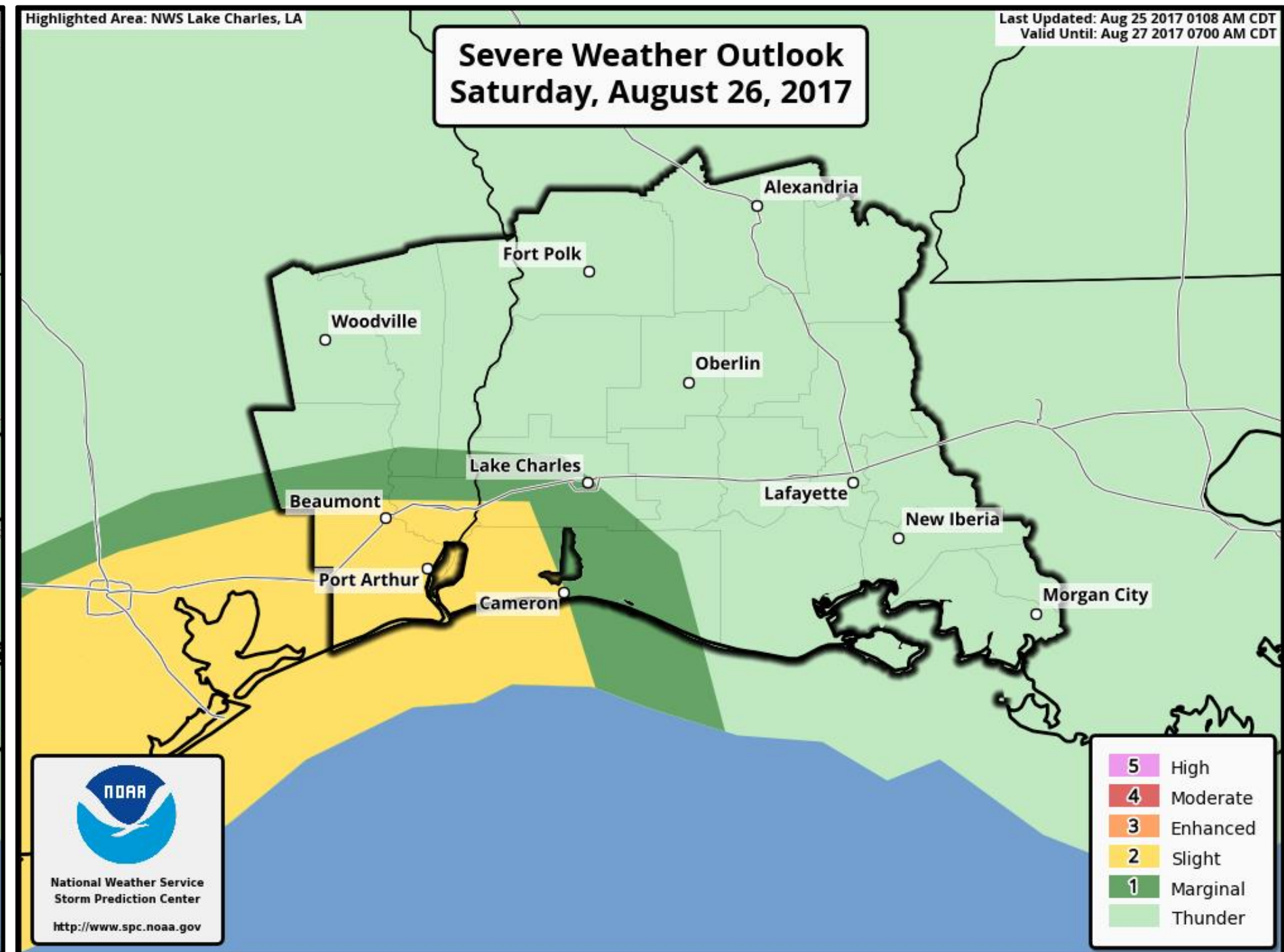
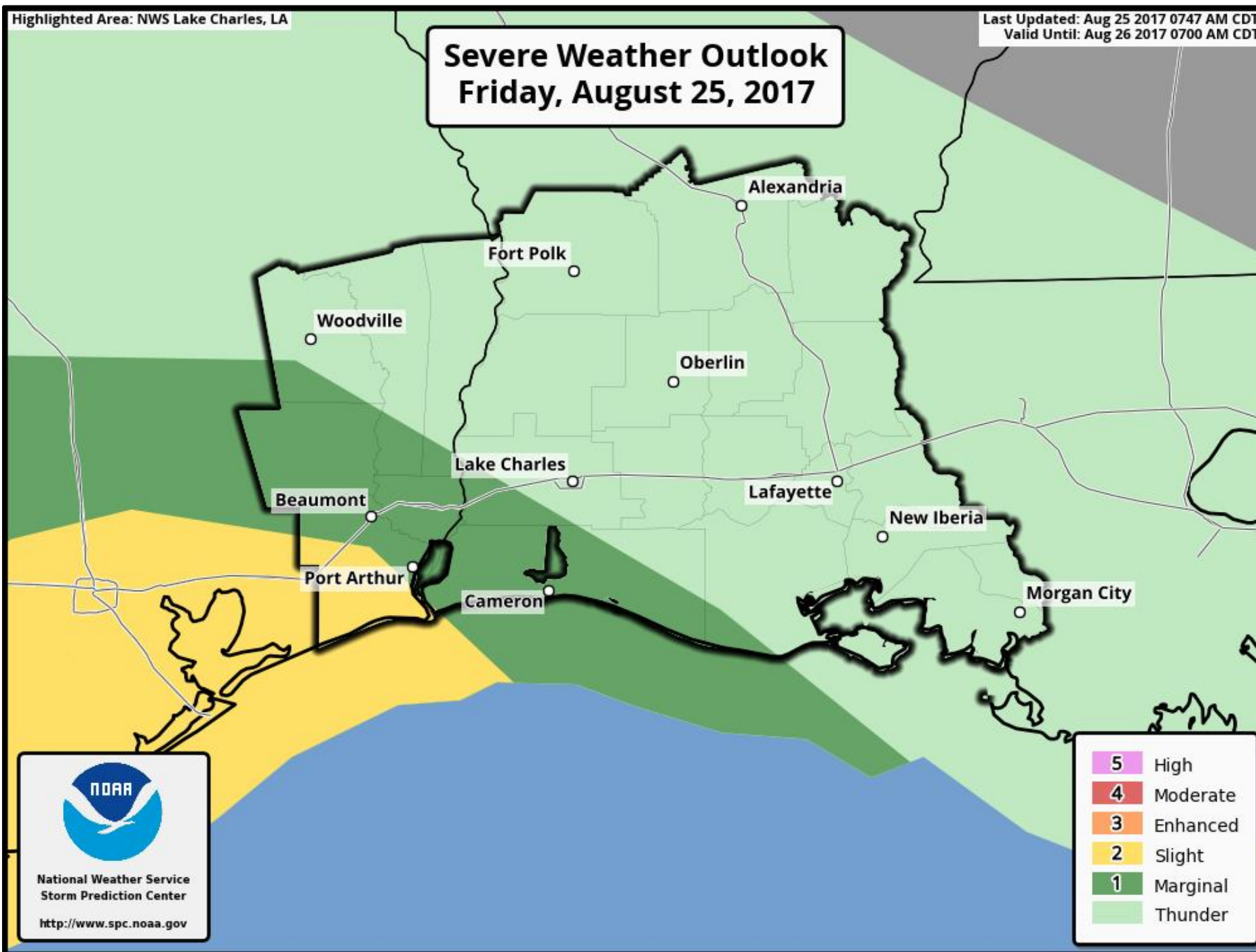
- Winds of 20 to 35 knots in the coastal waters from tonight through Sunday night, with gusts in the 45 knot range.
- Along the coast, east winds will gust to 25 to 35 mph.

Tornado Potential



Lake Charles
WEATHER FORECAST OFFICE

Hurricane Harvey



The risk for tornadoes has increased for both today and Saturday, especially in southeast Texas. The most likely time to see tornadoes is during the day hours, but they can occasionally occur at night.



- Hurricane Harvey is almost a category 3 hurricane, and could make landfall as a major category 4 hurricane on the central Texas coast Saturday morning.
- Harvey will weaken to a tropical storm by Sunday, before slowly moving up the Texas coast next week.
- Long duration of heavy rain and flooding will be possible across our region.
 - Storm totals: Southeast Texas 10-20 inches, Southwest Louisiana 8-15 inches, Central Louisiana 5-7 inches, South Central Louisiana 7-10 inches.
 - Major river flooding is possible on Pine Island Bayou near Sour Lake and the Calcasieu River at Old Town Bay and Sam Houston Jones State Park.



- Storm Surge will be one to three feet above ground level for coastal sections of southeast Texas and southwest Louisiana, and one to two feet above ground level in south central Louisiana.
 - Timing of the highest storm surge threat is this evening through Sunday morning, especially during high tide.
- Winds could gust in the 25-35 mph range along coastal sections of southeast Texas and southern Louisiana Friday night through Sunday night.
- The tornado threat is increasing for southeast Texas and parts of southwest Louisiana today and Saturday.



HURRICANE HARVEY BRIEFING

Please contact WFO Lake Charles at
337-477-5285 x1
or through the “LCHchat” NWSChatroom

*The Next Briefing Will Be:
Friday at 4:30 PM CDT*

You can get the latest graphics and information on this storm at www.hurricanes.gov



NWSLakeCharles

www.weather.gov/LakeCharles